

Introducing Guide Technologies'

RollPro 360

for Infor CloudSuite™ Industrial (CSI)

Enhance Infor CSI with advanced features for roll coil and slit sheet processing.

Developed for manufacturers, processors, and distributors, RollPro 360 improves operational visibility, inventory tracking, yield, costing, and traceability—while ensuring full ERP integration and compliance with industry standards.



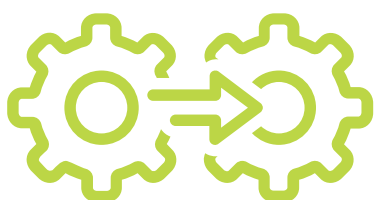
Maximize yield. Minimize scrap. Drive smarter slitting operations.

Key Benefits

- Reduce scrap with optimized slitting patterns
- Track coil usage by weight, not just units
- Ensure compliance with ASTM, ISO, and other standards
- Improve production agility with job-level scheduling
- Enhance traceability with full heat/lot tracking
- Automate customer-specific labeling and specs



Seamless Integration



- Built specifically for Infor CloudSuite Industrial
- Integrates with MES, EDI, logistics, and finance modules
 - Real-time MES updates
 - EDI support for customer and supplier orders
 - Logistics coordination for JIT delivery
- Keeps data flowing in real time across production, inventory, and quality

Elevate Your ERP Investment

RollPro 360 enhances CSI with specialized functionality that reduces reliance on manual processes, spreadsheets, and third-party bolt-ons—delivering industry-specific capabilities right where you need them.



Introducing Guide Technologies'

RollPro 360

for Infor CloudSuite™ Industrial (CSI)



Purpose-Built Slitting and Coating Functionality—Fully Embedded in CSI

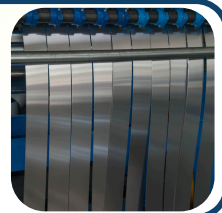
Coil Inventory Management

- Track coil weight, dimensions, and specs in real time
- Heat/lot traceability from mill to shipment
- Weight-based consumption calculations



Slitting Process Control

- Work order-based slitting job scheduling
- Maximize yield with slit planning optimization
- Track multiple output coils from one master



Sales & Order Fulfillment

- Configure orders by slit width, tolerance, and packaging
- Auto-match orders to production runs
- Generate barcoded labels and shipping docs



Quality & Compliance

- Capture inspections: thickness, surface, edge condition
- Log and process non-conformance and rework
- Stay compliant with ASTM, ISO, and OSHA standards



Costing & Profitability

- Allocate material cost per slit coil
- Factor in scrap and yield loss
- Analyze job-level margins and ROI

